

Raptor II

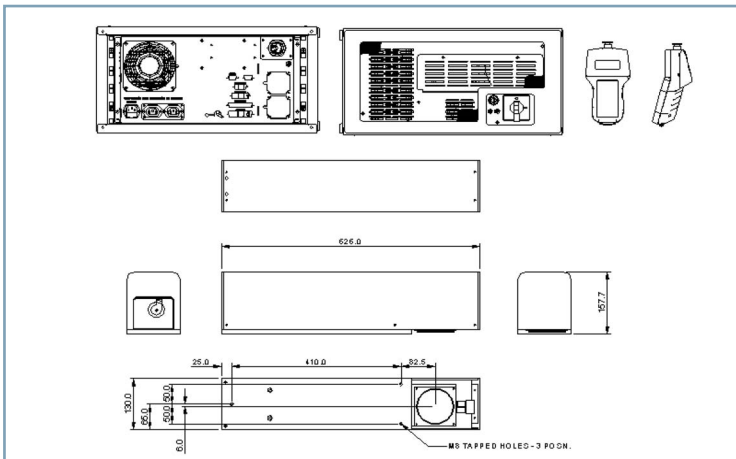
laser marking systems
powered by EF Technology

marking area parameters

flat field lens focal length	maximum square marking field	maximum marking diameter	working distance
100 mm	60 mm	85 mm	106 mm
163 mm	100 mm	140 mm	184 mm
254 mm	160 mm	220 mm	323 mm
410 mm	250 mm	350 mm	512 mm

dimensions

	Height (mm)	Length (mm)	Width (mm)	Weight (kg)
Laser Enclosure	158	626	130	12
Control Unit	535	267	552	32

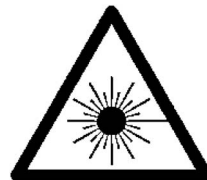


laser specification

Laser type - EF Technology
Wavelength - 1064 nm
Pulse frequency - CW, 0.1 - 100 kHz
Max marking speed - 10,000 mm.s⁻¹
Operating temperature - 15°C - 40°C (non condensing)
Max pulse energy - 0.4 mJ
Max peak power - 20 kW
Pulse duration - 25 ns (10 kHz)
Power stability - ±3%
Min spot size - <25 μm (100 mm lens)
Beam quality - <3 mm.mrad (M² <2)
Control electronics - 19 inch rack mounted (5U) module
Optical unit protection - IP67

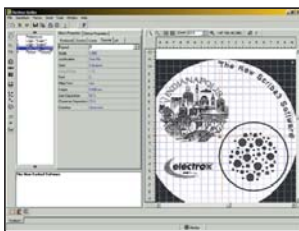
utilities

input voltage single phase + Earth, 50 or 60 Hz;
100 - 240 V
power requirement 250 W



software

Electrox laser marking software has been developed in conjunction with Raptor II to ensure optimum marking performance.



- Fast file transfer to the laser
- File import formats: PLT (HPGL), AI, DXF, PNL (Electrox), BMP, TIFF
- Bar Codes
- Two Dimensional Codes including Data Matrix
- Automatic Serialisation
- File Input Programming (Mail Merge)
- Date Coding
- Fill Editor
- Motion Control (4 Axis)
- Multiple I/O Interface



USA Office

5601 Fortune Circle, South Drive, Suite A,
Indianapolis, IN 46241, USA.
Tel: +1 317 248 2632 Fax: +1 317 240 5787
e-mail: sales.us@electrox.com

UK Office

Avenue One, The Business Park,
Letchworth Garden City, Hertfordshire, SG6 2HB, UK.
Tel: +44 (0)1462 472400 Fax: +44 (0)1462 472444
e-mail: sales.uk@electrox.com

Asia Pacific Office

Level 27, Prudential Tower, 30 Cecil Street
Singapore 049712
Tel: (65) 6725 6223 Fax: (65) 6725 6224